

For sale, several 3D printed accessories for the M2, M1, and many other rigs.
All prices include USPS shipping in the USA. International shipping is extra.
All threaded holes in the 3D parts have Helicoils® for strength.
All hardware is included.
Custom parts also available. Some are now products – see below.

New: Rod Mount with pivot

Like the other rod mounts, this rod mount easily attaches to 15mm rods on 60mm centers – there's no need to slide it on. The pivot has both a Tee handle lock and an adjustable brake so the monitor doesn't flop around when adjusting the pivot. A supplied (of course), captive, 1/4-20 SHCS (socket head cap screw) attaches the mount to the monitor. \$125.00

Here it is by itself:



Used here to support a return monitor:



The new rod mount with pivot is used here to hold a 2nd monitor for low mode:



And it is used this way to hold a below-the-lens return monitor for talent!



Newer still: Adjustable Width Rod Mount with pivot

This rod mount adjusts for center to center rod distances, from 60 to 90mm. 4 stainless steel rods keep it stiff when extended, and the 3D parts are beefier than the fixed width rod mounts.

\$175.

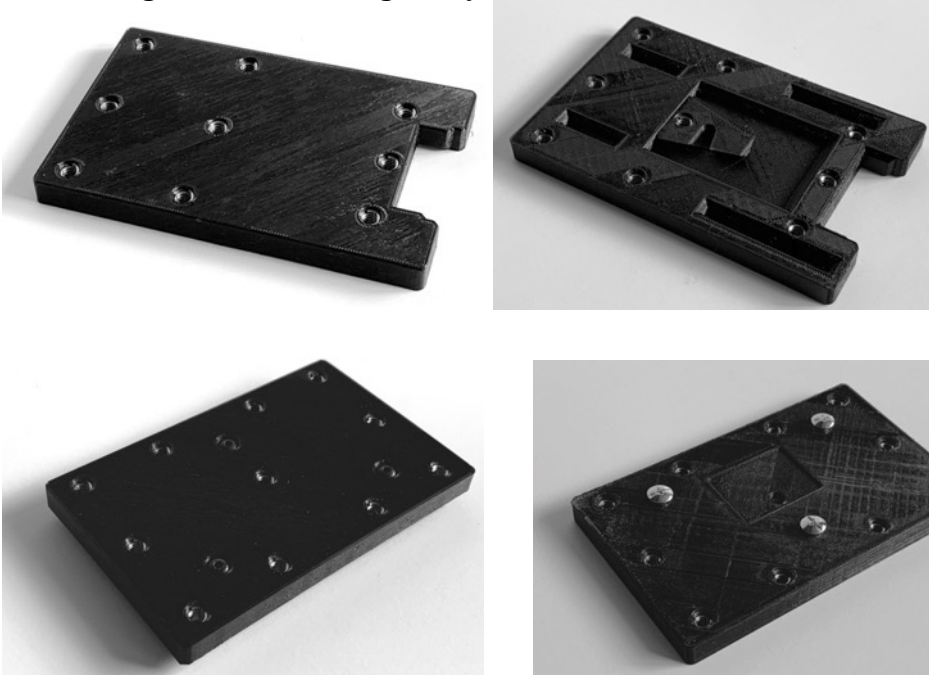
It is shown below with clamps for 15mm rods, but it can also be equipped with clamps for .620" rods, as are used in the Ultras, Clippers, Shadows, etc. (FYI, that was the old Panavision standard rod diameter).

There are also adjustable width versions without the pivot, for either 15mm or .620" rods. \$100.



The Original BattCheez

The Battcheez is an accessory “dummy” battery plate, either V-mount or AB mount. We first designed the plate to protect the optional 3rd battery mounts on the bottom of the M2 and to provide a flat surface so the sled can be set down safely on its base. We added a number of ¼-20 mounting holes to the plate so that accessories can be easily added wherever there is a spare battery mount – including on the back of a camera. It makes some of those crazy, accessory laden camera builds a little easier. The plates solidly mount to the battery holders, without wiggle. However, the plate is not designed for mounting heavy accessories like gyros. \$125.



NEW: The U2 BattCheez mounts to the Ultra 2 base’s dovetail.



VOLT Low-mode Collars

Low-mode docking collars for the M1, M2, and other “Volt modified” sleds (Ultra2, Archer 2, PRO, etc.) Designed to mate with your padded dock. \$75.00.

Please specify which sled and gimbal you have, as there are (so far!) eight different versions of this collar! For example, you might have a PRO sled with a modified PRO gimbal or a PRO sled with an M1 gimbal modified for a PRO sled.



Monitor Weights

Steel (not 3D printed!) monitor weights to fit Tiffen’s universal monitor mount (some monitors are so darn light you need the extra weight!). Set of two 1/2lb weights, (1lb total), or two 1lb weights, \$75.00. Set of 4 weights with 2 setscrews included for stacking, \$135. The weights are easily adaptable to other monitor yokes. Threads are 10-32 pitch. The weights can also be made with 1/4-20 threads, but they won’t work with the universal monitor mount as shown below.



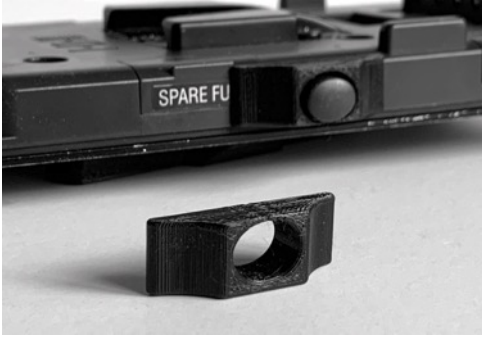
A mounting bracket that spans 15mm rods on 60mm centers. One version of the mount has a 10-32 screw to fit the monitor weights described above. The other version has a ¼-20 thread to mount other accessories. \$50 for the mount, or \$35 when bought with two weights. Shown below with a 1lb weight.

NEW: Two versions of this non-adjustable mount for Ultras (and the like), that clamps onto .620 rods on either 2.465" or 3.500" centers. (The adjustable version, above, clamps to either the battery or monitor rods). Specify 10-32 or ¼-20 threads and width.



V-lock Bumpers

These are protective bumpers for the release buttons on V-mount battery holders. A classy version of this bumper is part of the M2's design. These bumpers are intended to retrofit other sleds that use V-lock batteries. Right now I have two versions – one for IDX branded battery holders, and one for another unmarked brand. Not all brands of V-mount battery holders can be accommodated as some of the release buttons stick out way too much. \$20 for a set of two protectors.



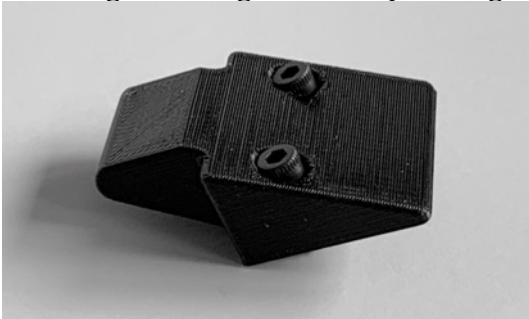
Aircraft Pin Cushion

A soft, protective bumper for the sharp edge of the “aircraft pin” on the arm. Two sizes, big (the old standard) and slim. \$20. (These bumpers are made of a cushiony material that is a PITA to print, but they work very well). Specify your pin head size. Not an insult.



Angled Kickback Block

A kick back block for the arm socket block. This general design is now standard on Tiffen arms to allow the upper arm section to move further back and out of the way as the sled is placed more in front of the operator's body. An example of this is shooting to the right when operating in regular mode. Also shown in above pix. \$35.

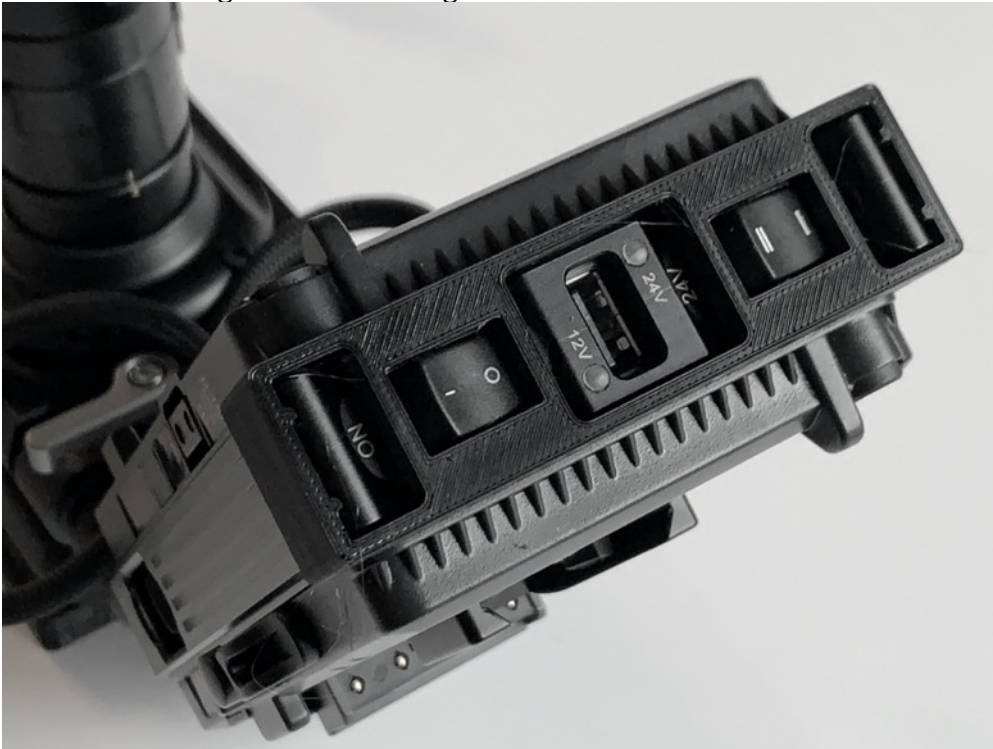


EZ Cable Guide v.2

Just for the M2: Version 2 is a soft and pliant replacement for the supplied cable guide that makes it much easier to attach and detach cables. The guide is free when purchased with any one of the other accessories. \$10.00 when ordered separately.

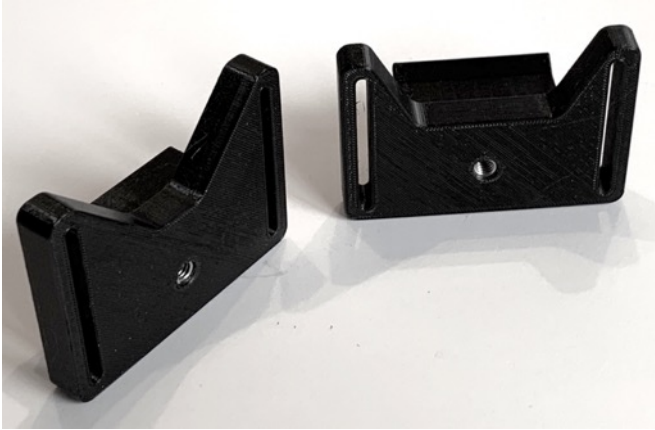
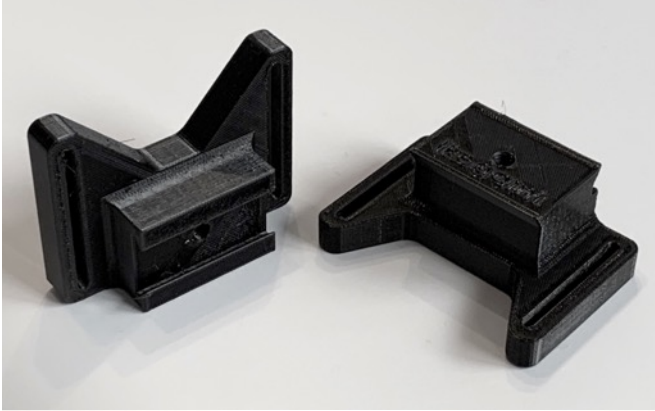


New for the M2: A guard for the switches on the battery mount. The guard makes it tough for anything to accidentally bump those switches, like a pointy elbow in mid shot. \$50. The lights and lettering are still visible.



VF Prompter Bracket

A prompter monitor bracket to fit broadcast cameras, one version for Sony and one version for Ikegami. The bracket mounts securely to the eyepiece holder. Vibration-free. The slots match the standard 75mm Vesa spacing, using 2 holes on the back of the monitor. Two M4 thumb screws are included. \$75 each or \$135 for both brackets. Each bracket has a 1/4-20 threaded hole for alternate mounting options.



NEW for the VF prompter bracket: At the request of Rob Vouna, I made a bottom mount adapter for those monitors that have a 1/4-20 hole on the bottom.

VF prompter bracket and Bottom Mount, \$125.

Two 6-32 thumb screws, two M4 thumb screws, and one captive 1/4-20 screw included. Specify Sony or Ikegami for the bracket.



75100X Bracket

This bracket is for mounting monitors with 75mm or 100mm Vesa spacing. Five ¼-20 threaded holes. Four 4mm thumb screws included. \$100.



Email me with any orders (I don't generally answer PM's).

jholway@comcast.net

Any questions will be answered here.

Ideas for other accessories welcome.